

36°E

36°20'E

Nahr el Kabir Basin

- International boundary
- Selected city, town
- Basin boundary
- Zone of agricultural development
- River
- Intermittent river, wadi
- Canal, irrigation tunnel
- Freshwater lake
- Spring
- Dam
- Monitoring station



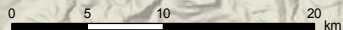
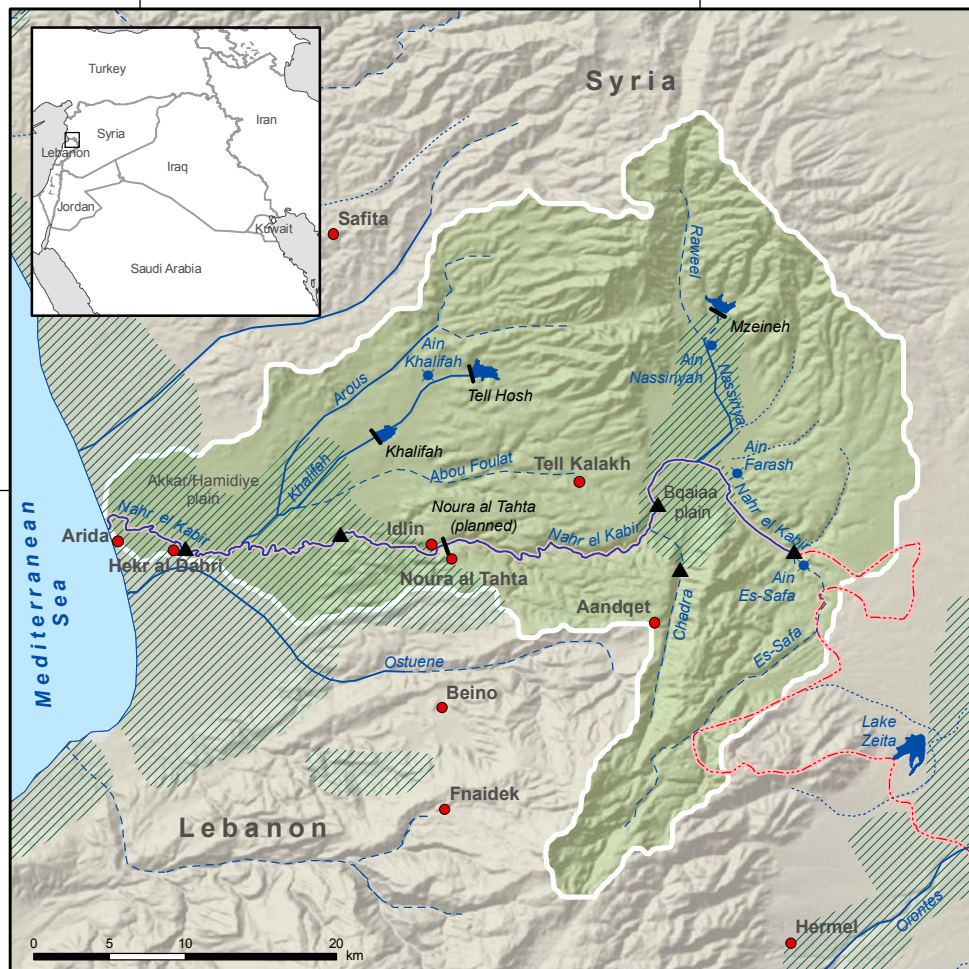
BGR Bundesanstalt für Geowissenschaften und Rohstoffe

Inventory of Shared Water Resources in Western Asia

Disclaimer
The boundaries and names shown and the designations used on this map do not imply official endorsement or acceptance by the United Nations.

© UN-ESCWA - BGR Beirut 2013

34°40'N



36°E

36°20'E