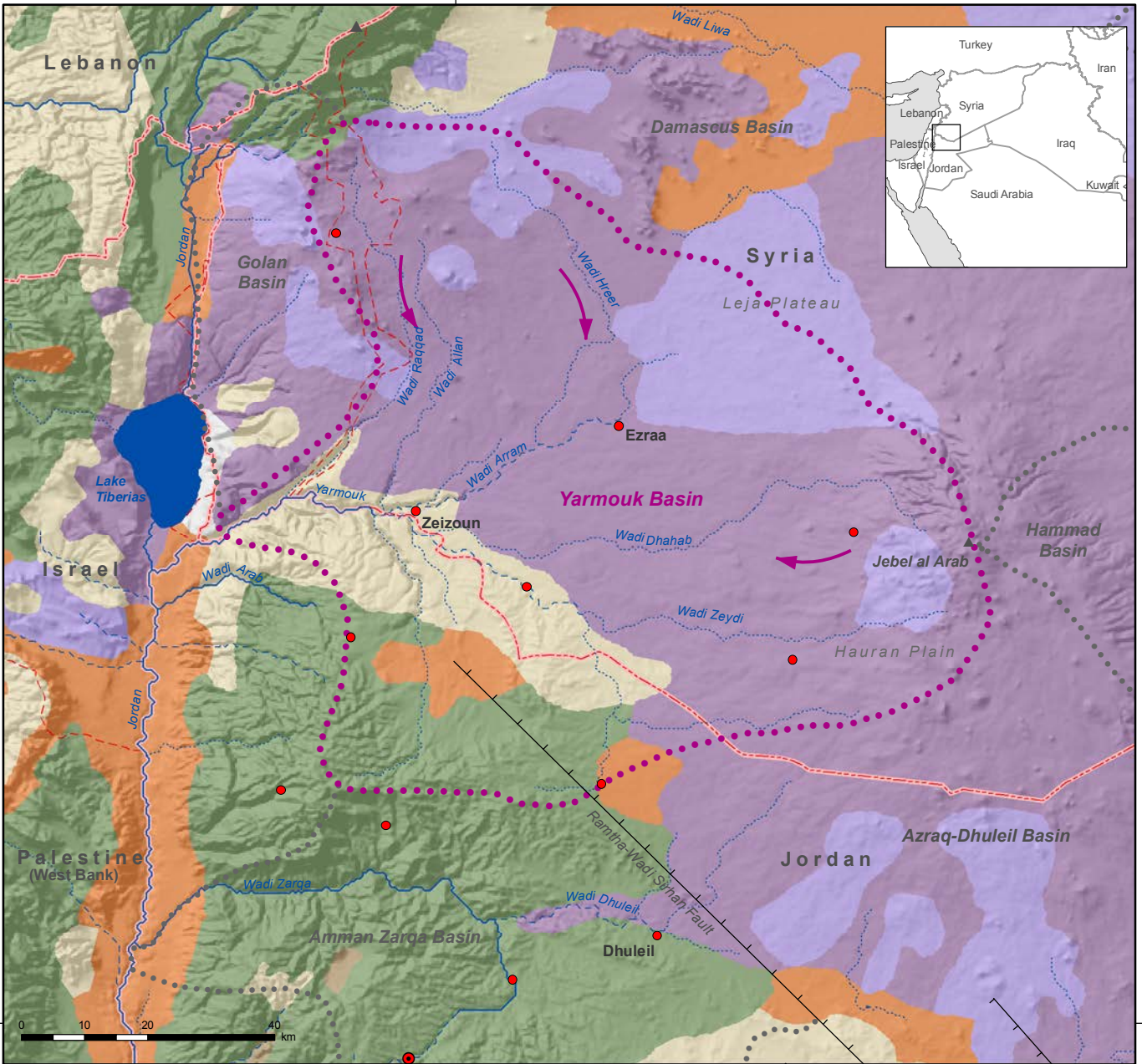
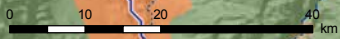


36°E



32°N



32°N

Basalt Aquifer System (West): Yarmouk Basin

- Capital
- Selected city, town
- International boundary
- - - Armistice Demarcation Line
- ~ River
- ~ Intermittent river, wadi
- ☪ Freshwater lake
- ▲ Mountain
- ┌ Graben
- Quaternary volcanics
- Neogene volcanics
- Quaternary-Neogene undifferentiated
- Paleogene (Wadi Shallala and Umm Rijam Fms)
- Cretaceous (Amman and Wadi as Sir Fms)
- Pre-Cambrian outcrops
- ➔ Direction of groundwater flow in Yarmouk Basin
- Boundary of Yarmouk Basin
- Basin boundary



BGR Bundesanstalt für Geowissenschaften und Rohstoffe

Inventory of Shared Water Resources in Western Asia

Disclaimer:
 The designations employed and the presentation of material on this map do not imply the expression of any opinion whatsoever on the part of the Secretariat of the United Nations concerning the legal status of any country, territory, city or area or of its authorities, or concerning the delimitation of its frontiers or boundaries.