

36°E

37°E

ORONTES BASIN

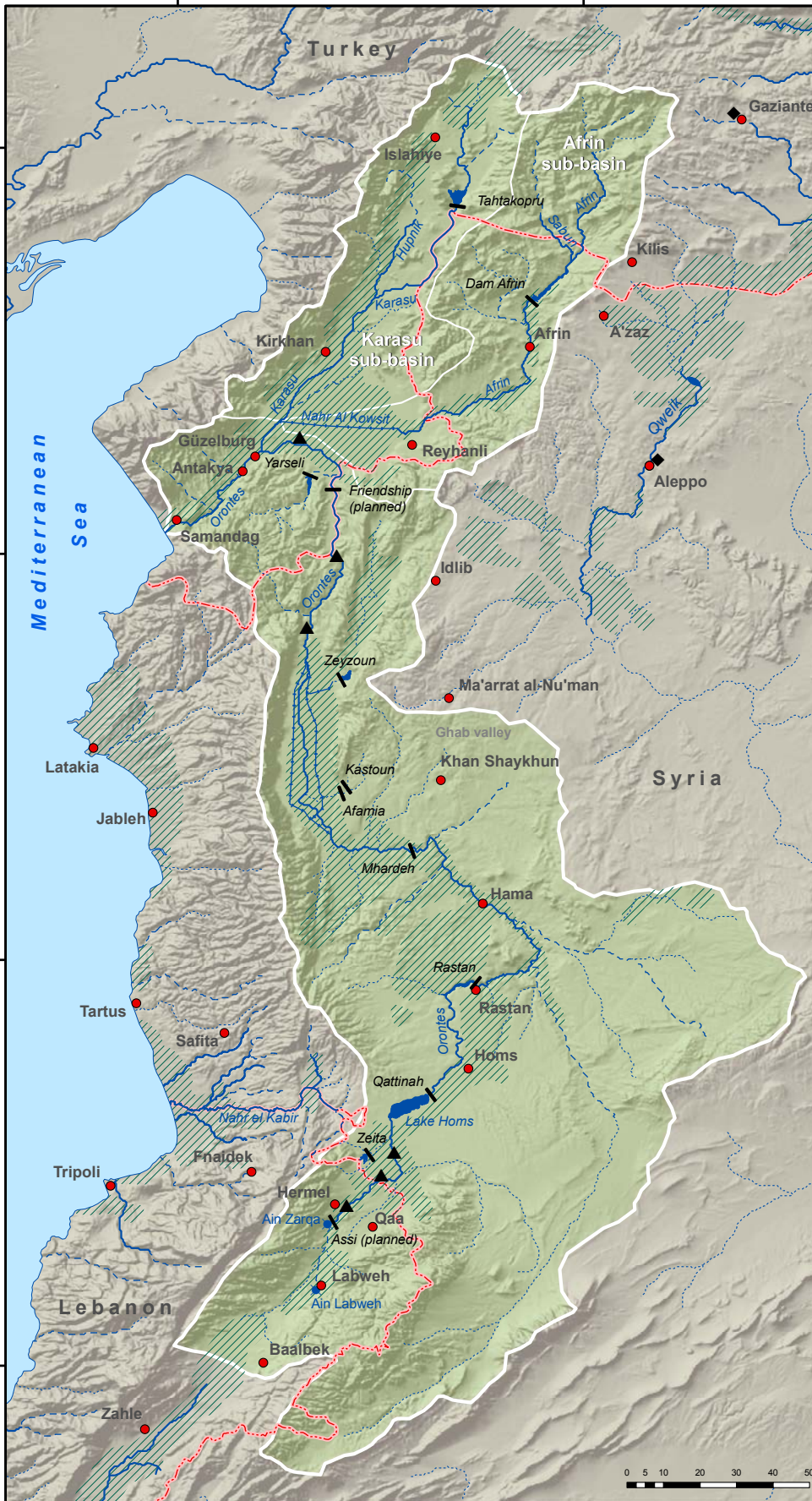
37°N

36°N

35°N

34°N

- Country boundary
- Selected city, town
- Basin boundary
- Main shared sub-basin boundary
- Zone of irrigation development
- River
- Intermittent river, wadi
- Canal, irrigation tunnel
- Freshwater lake
- Spring
- Dam
- Monitoring station
- Climate station



Inventory of Shared Water Resources in Western Asia

Disclaimer
The boundaries and names shown and the designations used on this map do not imply official endorsement or acceptance by the United Nations.

© UN-ESCWA - BGR Beirut 2012